

The Monthly Maize Market Report was developed by researchers at IFPRI-Malawi, with the goal of providing clear and accurate information on the variation of daily maize prices in selected markets throughout Malawi. The reports are intended as a resource for those interested in maize markets in Malawi, namely producers, sellers, consumers, or other agricultural stakeholders.

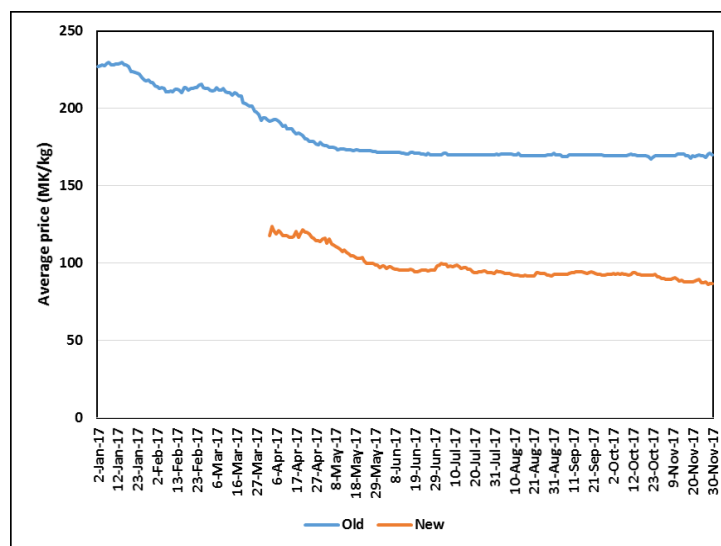
### Highlights

- The average maize retail price (new stock) was MK95/kg during November 2017.
- ADMARC is buying in 13 of the 15 markets monitored.
- Despite the lifting of the export ban, retail prices in Malawi remain the lowest in Eastern & Southern Africa.

### Old vs New stock prices in 2017

Since April 2017, daily maize prices were collected for the old stock from the previous harvest (2015/16) plus the new stock from the most recent main harvest of 2016/17. Figure 1 compares old and new stock prices from April 2017 to November 2017. New stock has been trading at a substantial discount in comparison to old stock throughout the period. However, by this point in the year, old stock has mostly been disposed of and what is left for sale is generally new stock. Therefore in subsequent sections, the maize prices given refer to new stock price. The average retail maize price for new stock was MK95/kg during the month of November 2017.

Figure 1. Daily average maize prices since 1<sup>st</sup> January 2017



### Slight price decrease in November 2017

Table 1 shows that retail maize market prices declined by 3% during the month of November 2017. Only 2 (Rumphi and Nkhamenya) out of the 15 markets reported price increases while 3 markets reported no price change in November 2017. The majority of markets reported price decreases of 2 to 9%. Although the largest price decrease was reported in the Centre (9% in Mchinji), the South reported the largest number of markets with price decreases (Nsanje was the only market in the South which reported no price change). Maize prices were highest in the South and lowest in the Centre.

Table 1. Maize retail prices (MK/kg) by market

Market	31-Oct-17	13-Nov-17	23-Nov-17	30-Nov-17	Monthly change
Karonga	95	90	88	88	↓ -7%
Rumphi	83	83	85	85	↑ 2%
Mzimba	68	72	68	68	↔ 0%
Mzuzu	75	72	70	70	↓ -7%
Nkhamenya	72	75	80	73	↑ 2%
Mponela	70	70	70	70	↔ 0%
Mchinji	81	76	76	74	↓ -9%
Mitundu	77	77	77	73	↓ -4%
Chimbiya	72	72	73	70	↓ -2%
Liwonde	107	107	107	103	↓ -3%
Mwanza	113	113	113	110	↓ -3%
Lunzu	107	103	100	100	↓ -6%
Mulanje	123	123	123	120	↓ -3%
Chikwawa	100	100	95	95	↓ -5%
Nsanje	107	107	113	107	↔ 0%
<b>Average</b>	<b>90</b>	<b>89</b>	<b>89</b>	<b>87</b>	<b>↓ -3%</b>

## ADMARC buying maize at MK170/kg and selling at MK250/kg

ADMARC continues to buy maize at MK170/kg and sell maize at MK250/kg. Out of 15 markets monitored, 13 reported that ADMARC was buying maize in November 2017. ADMARC was reported not to be buying Chikwawa and Liwonde in the South.

The average retail price in markets where ADMARC was reported not to be buying was higher (MK102/kg) than the price reported in markets where ADMARC was buying (MK95/kg) during November.

ADMARC was reported to be selling maize in all markets during the month but their sales price (MK250/kg) remains substantially above market prices.

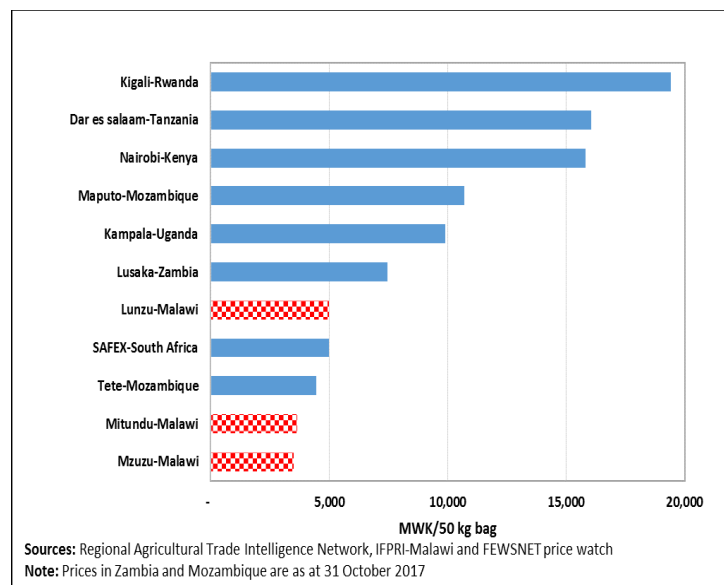
Figure 2. Location of markets where ADMARC was buying maize in November 2017



Figure 3. Retail maize prices in selected markets in Eastern and Southern Africa, 30 November 2017

## Regional prices in November 2017

Figure 3 shows retail maize prices in selected markets in Malawi and six countries in the Southern and Eastern African region. Retail maize prices in Kigali-Rwanda continue to be the highest, followed by Dar es salaam-Tanzania and Nairobi-Kenya. Two Malawian markets (Mzuzu and Mitundu) were reported to have the lowest retail maize prices in the region, followed by Tete-Mozambique. There is therefore no evidence that the lifting of the maize export ban on 30 October has improved maize prices for Malawi farmers and traders.



## How data was collected

IFPRI has been monitoring retail maize prices and ADMARC activities in selected markets since November 2016. Currently, the data is collected from 15 markets across the country. The monitoring covers six days in a week, excluding Sundays. At least three monitors report in each of the markets. Data is collected by means of automated short message service (SMS) with follow-ups made by telephone if necessary. The regional prices reported in Figure 3 are collected from the Regional Agricultural Trade Intelligence Network (RATIN) and the Famine Early Warning Systems Network (FEWS NET).



For further information contact: Anderson Gondwe ([a.gondwe@cgiar.org](mailto:a.gondwe@cgiar.org)) or Chiyembekezo Chafuwa ([c.chafuwa@cgiar.org](mailto:c.chafuwa@cgiar.org)) at IFPRI.

To learn more about IFPRI-Malawi's work, please visit: <http://massp.ifpri.info>